



**INDUSTRY**  
INDUSTRIE



## CONTENTS

<b>STRUGAL GROUP</b>	<b>STRUGAL GROUP</b> .....	<b>06</b>
	360° SERVICE .....	<b>08</b>
	STRUGAL PRESENCE .....	<b>10</b>
<b>CAPACITY</b>	.....	<b>14</b>
<b>R&amp;D</b>	.....	<b>18</b>
<b>SECTORS</b>	.....	<b>22</b>
<b>MANUFACTURE</b>	<b>MANUFACTURE</b> .....	<b>26</b>
	ALUMINIUM EXTRUSION .....	<b>28</b>
	LACQUER .....	<b>32</b>
	ANODISED .....	<b>34</b>
	CUTTING AND MACHINING .....	<b>36</b>
	DECORATIVE SUBLIMATION .....	<b>38</b>
	THERMAL BRIDGE BREAK .....	<b>40</b>
	ACCESSORIES .....	<b>42</b>
	COIL COATING .....	<b>44</b>
	CUSTOMISED PACKAGING .....	<b>46</b>
<b>LOGISTICS</b>	.....	<b>50</b>
<b>INDUSTRY 4.0</b>	.....	<b>52</b>
<b>CERTIFIED QUALITY</b>	.....	<b>54</b>
<b>SUSTAINABLE STRUGAL</b>	.....	<b>56</b>

More than

# 1.500

PROFESSIONALS

**Spread across our headquarters, production sites, sales offices and distribution centres.**

For more than 5 decades, STRUGAL has not stopped growing. Our national and international expansion has been driven by a single objective: to raise the quality and innovation of our projects, of your projects.

The growth of our factories not only means an increase in production capacity, but also a continuous contribution to the economic development of various regions.

Our commitment has always been to efficiency, because by optimising our processes, we also improve yours.

At STRUGAL we guarantee you exclusive quality results, conceived and brought to fruition just for you.

**We wish to continue to grow alongside you.**



# 360° SERVICE

**100%** PRESENT

We address every stage, from the initial idea to the delivery of the product.

Excellence in the end result is much more than the sum of its parts. That is why we guarantee a **360° service**, whereby we at STRUGAL get involved and supervise the entire industrial process, from the initial spark of inspiration to the delivery of the final product.

**The entire manufacturing process is carried out in our facilities and under the STRUGAL guarantee.**

Our commitment is to you, but also to our environment and to sustainable industrial growth that creates opportunities for all.

Working with STRUGAL also means communicating with **a single contact person assigned to your project**. This is because clear and simple communication always makes things easier.

We have established ourselves as a benchmark both in Spain and internationally. **Our track record speaks of innovation, quality and confidence.**



## CUSTOMISATION

We offer tailor-made solutions for each project, guaranteeing the exclusivity of our solutions, finishes and textures.



## PRODUCTION

360° service: design, extrusion, finishing, machining and distribution.



## TECHNICAL CONSULTANCY

Our team of technical specialists in industrial design work hand-in-hand with you to guarantee the results you are looking for.



## TECHNICAL CAPACITY

Our extrusion plants and production centres are equipped with the most advanced technology and machinery on the market.



## DELIVERY TIMES

Our capacity and optimised production processes guarantee your delivery, where you need it, when you need it.



## WARRANTY

Our R&D Area, together with the Quality Department, carry out rigorous checks to ensure that your expectations are met.

# STRUGAL Presence



We are present in over 30 countries with production plants located in Spain and Africa.

We have a large team distributed among 22 work centres, 10 production centres, and an extensive sales network both nationally and internationally to serve you with proximity and dedication.

## 10 PRODUCTION CENTRES, in-house Technology Centre and international presence

- STRUGAL SEVILLE
- STRUGAL MOROCCO
- STRUGAL SOLAR
- STRUGAL COMPOSITE PANEL
- NAZAN ALUMINIUM
- NAZAN PVC
- NAZAN SOLAR
- STRUGAL GLASS
- ALUDOORS
- STRUGAL ACCESSORIES

### America

Netherlands Antilles - Brazil - Chile - Colombia  
Costa Rica - Ecuador - United States French  
Guiana - Jamaica - Mexico - Panama - Peru  
Dominican Republic - Uruguay

### Europe

Germany - Austria - Spain - France - Italy  
Poland - Portugal - United Kingdom

### Africa

Algeria - Cameroon - Côte d'Ivoire - Guinea  
Equatorial - Morocco - Mauritania - Republic  
of Cape Verde - Senegal - Tunisia

### Asia

United Arab Emirates - South Korea

### Oceania

New Caledonia



**We are committed to getting to where our customers need to go**

# Capacity

**64.000** Tn year  
PRODUCTION CAPACITY

We are leaders in the aluminium extrusion industry. Our experience, capacity and track record allow us to make your goals a reality.

**We can handle everything from profile extrusion to EPDM manufacturing, plastic injection, recycling, lacquering, anodising, thermal breakage, decorative sublimation, extruded profile machining, polymer extrusion, zamak and aluminium injection casting, manufacturing of accessories, rubbers, polyamides, metal coil stamping... we are more than prepared to face any challenge.**

The combination of highly specialised equipment, state-of-the-art technology and machinery allows us to manufacture a wide range of customised products and satisfy even the most demanding requirements.

**At STRUGAL, excellence is our standard.**

**275.000** m<sup>2</sup>  
PRODUCTION CENTRES

**7** ALUMINIUM  
EXTRUSION  
PRESSES  
64,000 Tn/year

**4** DECORATIVE  
SUBLIMATION  
PLANTS  
900,000 Bars/year

**14** CUTTING  
CENTRES

**13** MACHINING  
CENTRES

**4** LACQUERING  
PLANT  
13 million Bars/year  
6 million Pieces/year

**2** ANODISING  
PLANTS  
1,7 million Bars/year

**4** BREAK  
LINES  
1 million Bars/year

**2** BUFFERS  
WAREHOUSES  
1 million Kg/stock



**Excellence is  
our standard**



## R&D

**+200**

**SPECIALISED TECHNICIANS**

**At STRUGAL we believe that only by investing in the most qualified team can we obtain the results we expect.**

**We have a team of more than 1,500 professionals,** with more than 200 specialised technicians including architects, engineers and laboratory technicians, distributed among 10 production plants and 22 work centres.

Our engineering and architecture team, specialised in the development of profiles and customised parts, offers you a permanent technical service. We work in collaboration with each client to optimise time and resources.

In addition, we manage the entire aluminium production cycle, offering fully finished high-value profiles.

Our highly trained staff is coupled with state-of-the-art technology. The result? Significant time and cost savings for your company.

We carry out **customised industrial design** and offer technical assistance and specialised training.



**We offer a tailor-made  
solution in all sectors  
of industry**

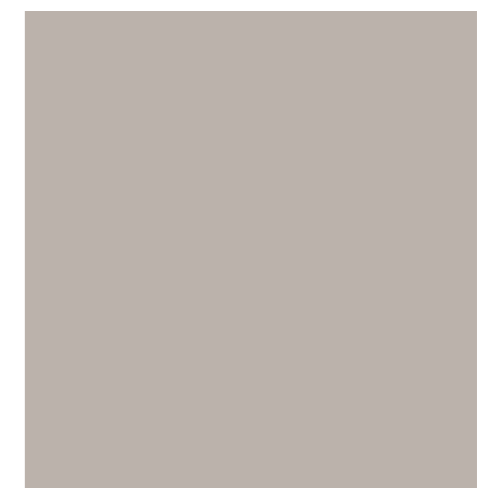
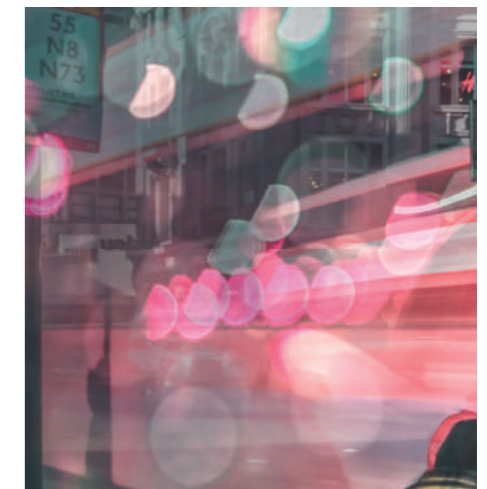
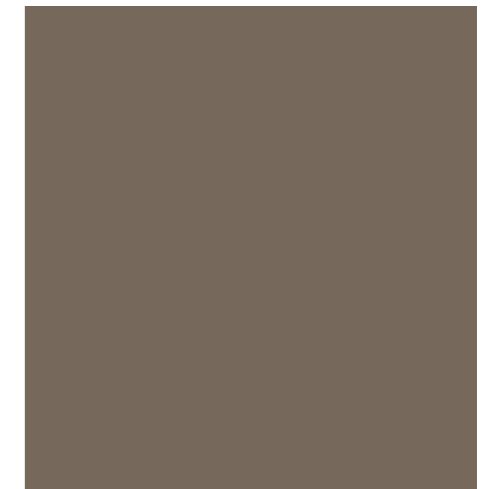
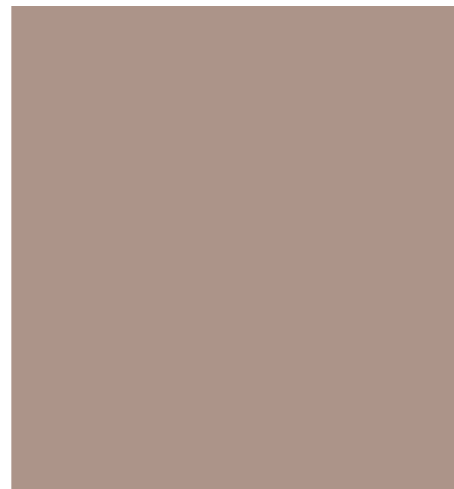
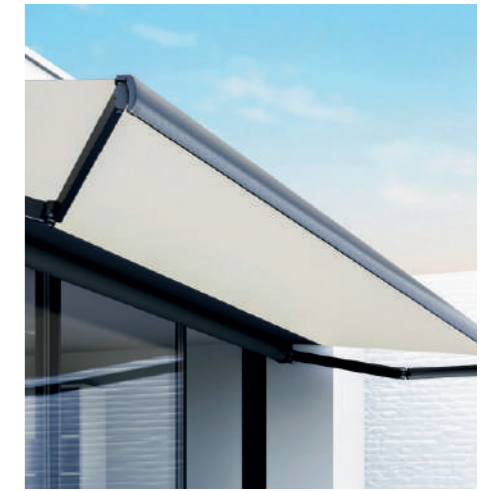
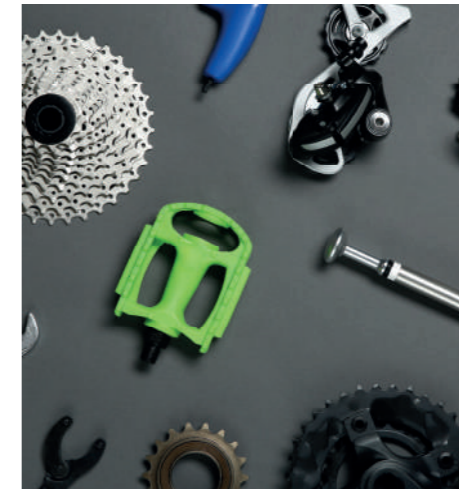
# Sectors

Our ability to provide you with specific answers extends to all sectors of industry and any sector requiring the manufacture of profiles and parts.

We cover everything from large industrial projects to more modest initiatives.

-  AUTOMOTIVE
-  ARCHITECTURE
-  AERONAUTICS
-  AIR CONDITIONING
-  COOLING
-  DOMESTIC APPLIANCES
-  ELECTRONICS
-  RENEWABLE ENERGIES
-  INFRASTRUCTURES
-  FURNITURE
-  TRANSPORT

**For STRUGAL, every project is unique,** and adaptability is the key to success in today's industry.





**Whatever you  
need, we make it  
happen**

# Manufacture

**100%** STRUGAL

All processes are carried out entirely in-house.

At STRUGAL we are involved in a wide variety of industrial sectors. We design and manufacture from extruded profiles to any part or profile, in different sizes and materials. Our constant investment in technology and state-of-the-art machinery is a great commitment to the present and the future.

You know your needs better than anyone, we know how to materialise your ideas. Our experience and dedication allow us to transform your concepts into tangible realities, adapting to your specifications. From the design phase to the final implementation, we work with you to ensure that every detail is perfect. We don't just want to meet your expectations, we want to exceed them.

**Let us be the partner that turns your visions into successful and lasting projects.**

Our ability to achieve exactly what you need makes all the difference.  
**Your satisfaction is key.**

## Present in every process

### ALUMINIUM EXTRUSION

We take aluminium extrusion to new limits. **Overcoming barriers.**

### LACQUERING

Special colours, metallic and textured.

### ANODISING

Electro-colouring, electro-grating, matt, gloss and high-gloss.

### CUTTING AND MACHINING OF EXTRUDED PROFILE

We mould your ideas. Precision and design in every project.

### THERMAL BRIDGE RUPTURE

Maximum thermal efficiency in all your profiles.

### DECORATIVE SUBLIMATION

Perfect balance between strength and personalisation.

### ACCESSORIES AND CUSTOMISED PARTS

Versatility and functionality in the production of customised parts.

### COIL COATING

Durability and weatherproofing with an extensive range of colour and finish options.

### CUSTOMISED PACKAGING

Care and guaranteed safety during the transport and delivery process.

## ALUMINIUM EXTRUSION



**We have achieved a new level** in aluminium extrusion.

We take aluminium extrusion to new limits. Overcoming barriers. We know everything there is to know about aluminium, its properties, lightness, corrosion resistance, and recyclability. As a result, we create competitive profiles and components for various industrial sectors.

**Our process ensures aluminium of high purity and durability, perfect for any project with a commitment to sustainability and efficiency.**

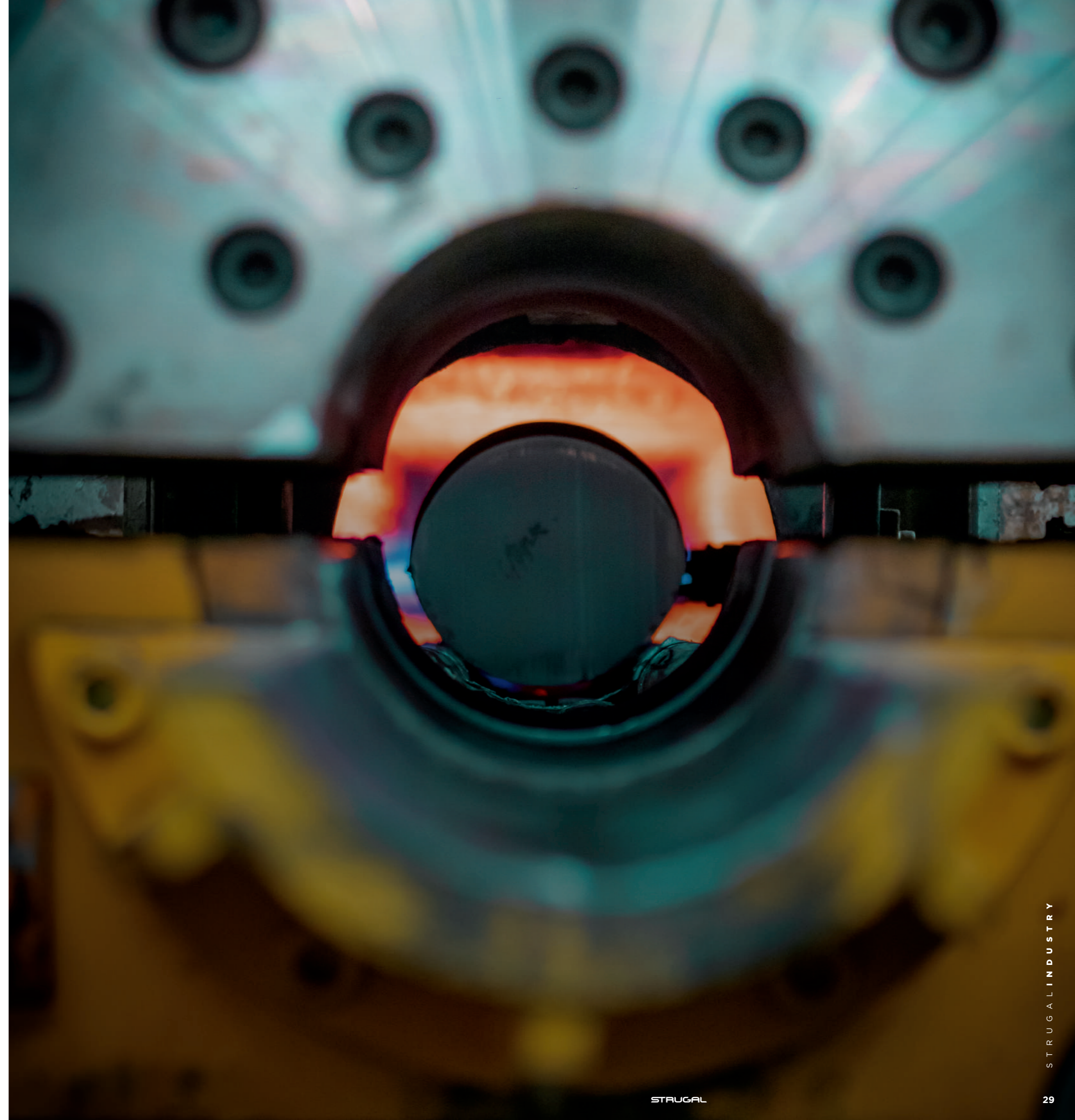
Our high annual production capacity allows us to supply aluminium to a wide range of customers with wildly differing needs. We can offer bespoke solutions to empower any business regardless of its size.

**Type:**

7 aluminium extrusion presses from 16 MN to 33 MN

**Annual production capacity:**

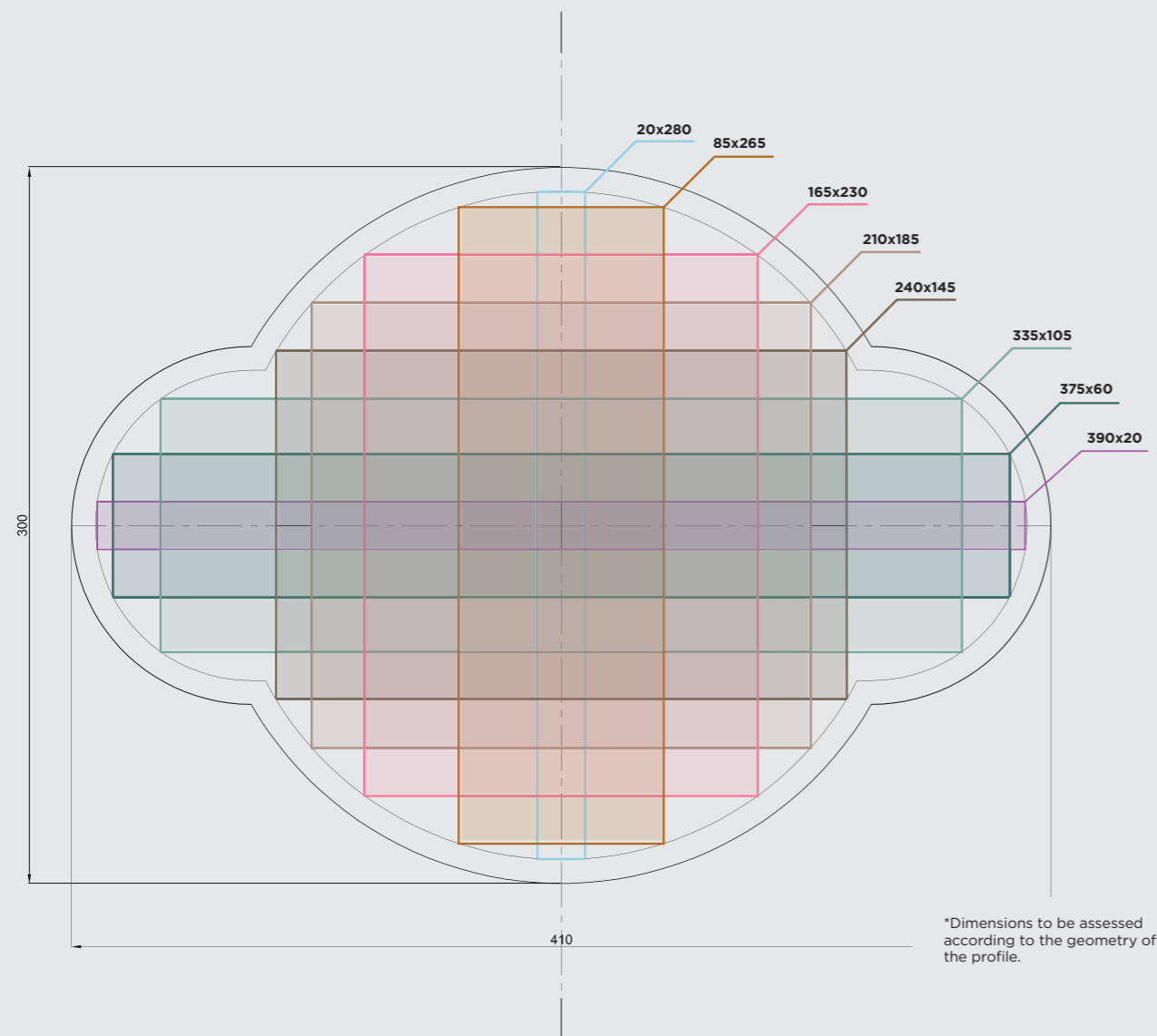
64,000 Tn / year



# ALUMINIUM EXTRUSION

Maximum precision and versatility for your projects

## DIMENSIONAL DRAWING OF PROFILES



## PRESSES

		16 MN	18 MN	22 MN	27 MN	33 MN
PROFILE WEIGHT (Kg/ml)	Minimum	0,07	0,07	0,7	1	1,5
	Maximum	1,8	1,8	5	6,5	8,5
Alloys		6060   6063   6005   6463   6061   6082   6106				
Extrusion plants		7 presses				
Maximum extrusion length		14 m				
Production capacity		64,000 Tn / year				

Note: Please consult us for heavier profiles.

## MINIMUM THICKNESSES (mm)

		TUBULAR PROFILE			FLAT PROFILE		
		6,060 6,063	6,082	6,005	6,060 6,063	6,082	6,005
CIRCUMSCRIBED CIRCLE (mm)	100	1,0	2,0	1,5	1,2	1,5	1,0
	200	1,8	2,8	2,2	1,5	2,2	1,8
	300	2,4	3,5	2,9	2,1	2,9	2,4
	400	3,2	4,4	3,8	2,8	3,8	3,2



## LACQUER



**Our commitment to exclusivity is absolute.**

Our products are custom designed and available in a wide range of colours and textures, including RAL chart options, NCS chart and special metallic and textured colours.

The durability and aesthetics of our products go hand in hand.

### **Type:**

4 lacquering plants:

- 3 for vertical lacquering
- 1 for horizontal lacquering

### **Production capacity:**

13 million Bars/year  
6 million Pieces/year

### **Lacquering length:**

Maximum: 7,500 mm  
Minimum: 4,000 mm

### **Diameter:** maximum dimensions:

200 x 250 x 7,500 mm

### **Finishes:**

Glossy - Matt - Textured

### **A wide range of colours:**

RAL Chart - NCS Chart Special  
Colours Metallic - Textured



## ANODISED



### **Electrocolouring**

Shot blasting - High  
gloss shot blasting - Shine.

Anodising on aluminium profiles **improves corrosion resistance, product life, maintenance and adhesion. All of this is undertaken safely, with respect for the environment.**

### **Type:**

2 anodising plants:

### **Annual production capacity:**

1,700,000 Bars/year

### **Maximum anodised length:**

7,000 mm

### **Colours: Electrocolouring**

Gold - Stainless steel - Bronze

Silver - Black

### **Anode layer:**

Up to 25 microns

### **Physical treatment:**

Burnished - Matt - High gloss - Shine

# CUTTING AND MACHINING

Aluminium profile



**We mould your ideas.**



**Precision and design  
in every project.**

Cutting lines, clipping,  
pantographs, etc.

## Tipología:

- 1 5-axis double-head cutting line
- 1 automatic cutting line
- 1 CNC long 3-axis workpiece
- 1 CNC long 5-axis workpiece
- 1 5-axis small part CNC
- 1 Clipped centre
- 1 Mat insertion line
- 2 Lamination lines

## CUTTING

### Length:

Maximum 10,530 mm | Minimum 5\* mm  
Width: 500\*\* mm | Height: 150\*\* mm

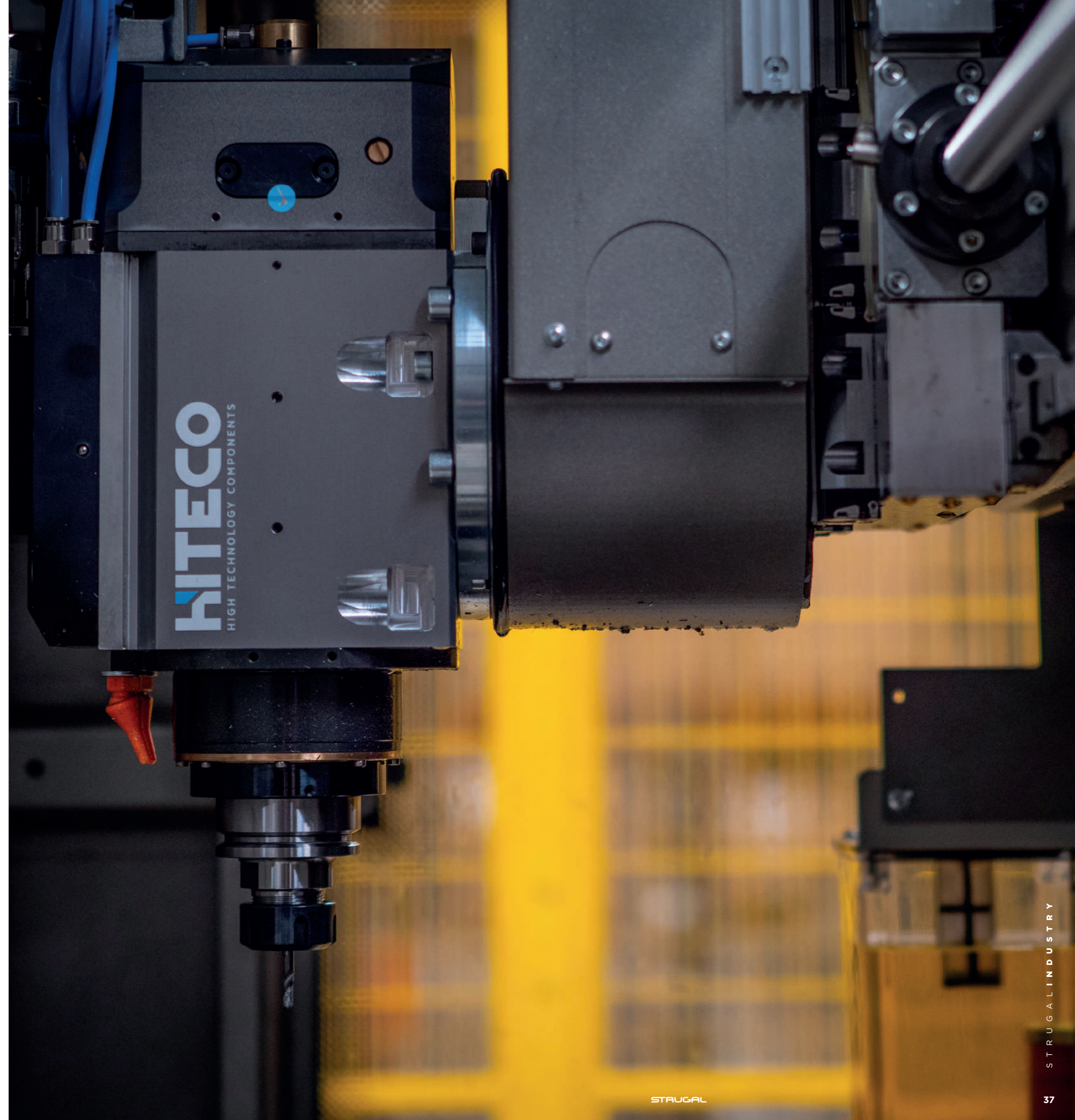
## MACHINING

### Length:

Maximum 12,600 mm | Minimum 5\*mm  
Width: 550 mm | Height: 350 mm

\*Ultra-short from 0 mm in increments.

\*\* Please consult us concerning specific profile shapes  
and cutting grades.



## DECORATIVE SUBLIMATION



Perfect balance between  
**resilience and customisation.**

**Decorative sublimation on aluminium beads offers new aesthetic possibilities. Our goal is clear — if you can imagine it, we can create it.**

This option brings more customisation and durability to your projects.

This process enhances the appearance of aluminium profiles, making them an ideal choice for structures for which a neat yet strong aesthetic is sought. Functionality need not be at odds with beauty.

**Type:**

4 decorative sublimation plants

**Production capacity:**

9,000,000 Bars/year

**Length:**

Maximum 7.000 mm

Minimum 4.000 mm

**Width:**

200 mm

**High:**

150 mm

**Finishes\*:**

Ember / Oak / Sapelly / Pine Walnut  
/ Teak / Wengue

\*We adapt to the client's needs.

## THERMAL BRIDGE BREAK



**Maximum thermal efficiency**  
in all your profiles.

Maximum thermal efficiency in all your profiles. Thermal breaks are a key innovation in the design of aluminium profiles for industrial applications, significantly improving the energy performance of structures and buildings. This technological advance involves the insertion of an insulating material between the inner and outer layers of the aluminium profile, drastically reducing heat transfer and eliminating thermal bridges. As a result, higher energy efficiency, reduced condensation, and superior interior thermal comfort are achieved.

Thermally broken profiles are ideal for sustainable construction, providing not only long-term economic benefits but also contributing to environmental protection.

**Greater comfort and energy savings, providing added value to your projects.**

**Type:**

3 assembly lines

**Production capacity:**

1,000,000 Bars/year

**Length:** 7.000 mm

**Width:** 240 mm

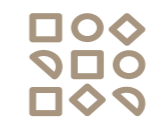
**High:** 230 mm





## ACCESSORIES

Customised manufacturing



**Versatility, functionality**  
and specialisation of  
customised parts.

### What do you need? We can do it.

We specialise in the manufacture of accessories and customised small parts and customised small parts, made of various materials such as aluminium, metal, zamak, brass and steel.

At the same time, we are experts in the manufacture of products using extrusion processes, plastic injection moulding, aluminium and zamak die casting, metal stamping and profile machining.

If you are looking for quality, we employ exhaustive control checks to guarantee it. Constant supervision and control.

### Type:

- 5 5-axis small part CNC
- 1 6-axis long part CNC
- 2 small part cutting lines
- 6 small workpiece machining centres
- 5 automated vibrating lines
- 6 robotic grinding and polishing cells

### Production capacity:

- 100 million polyamides | annually 80 million joints | annually
- 200 thousand hardware components | daily

# COIL COATING



**Precise** and personalised aesthetics.



**Protection** system against corrosion.

Our products feature a robust corrosion protection system.

We work with continuous painted aluminium sheets to form coils, shafts and sheets that can be up to 2,05 m wide. This allows us to offer a wide range of possibilities for various industrial and construction applications.

**Production capacity:**

5 million m<sup>2</sup>  
composite panel annually

**Coils:**

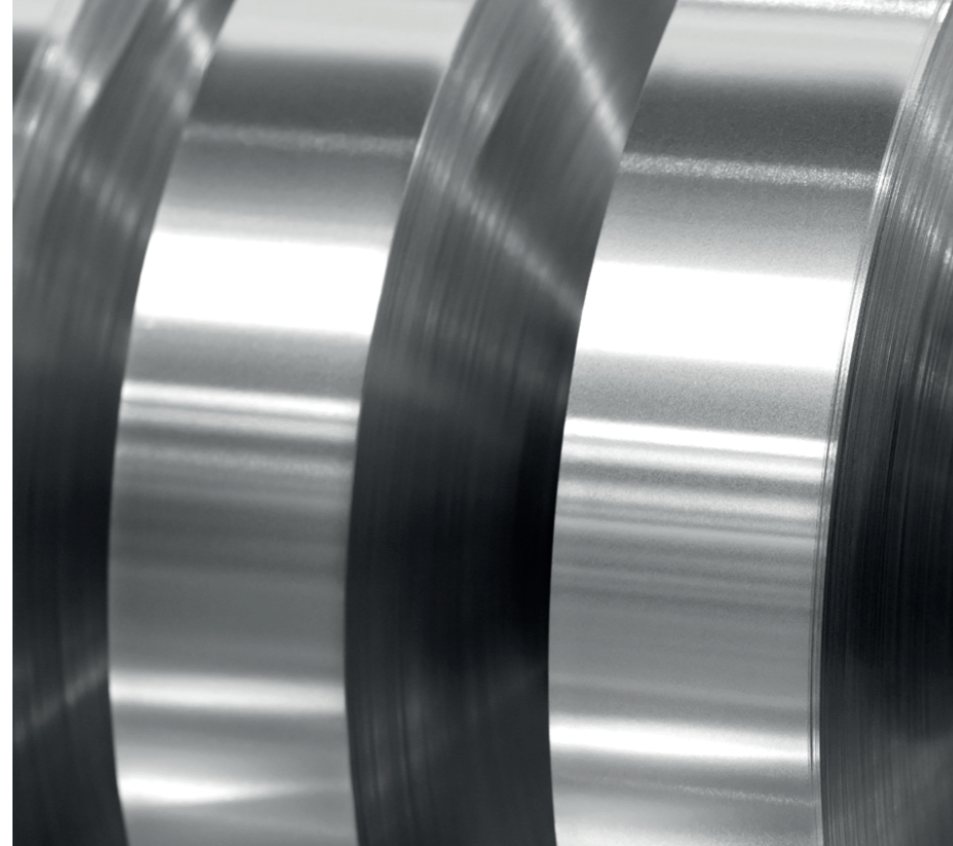
Thickness: 0,2 - 2 mm  
Width: 60 - 2,050 mm

**Strapping:**

Thickness: 0,2 - 2 mm  
Width: 60 - 800 mm

**Sheet:**

Thickness: 0,2 - 2 mm  
Width: 800 - 2,000 mm  
Length: 1,000 - 4,000 mm





## CUSTOMISED PACKAGING



**A guarantee of safety and  
excellence for your products.**

In our factories, customised packaging is a top priority. Each product receives unique treatment, guaranteeing its safety and protection during transport. Tell us your needs and we will design the shipment accordingly.

**Human care, the highest quality materials and the most innovative logistics software allow us to monitor your products in real time.**

Your goods arrive at their destination in perfect condition.

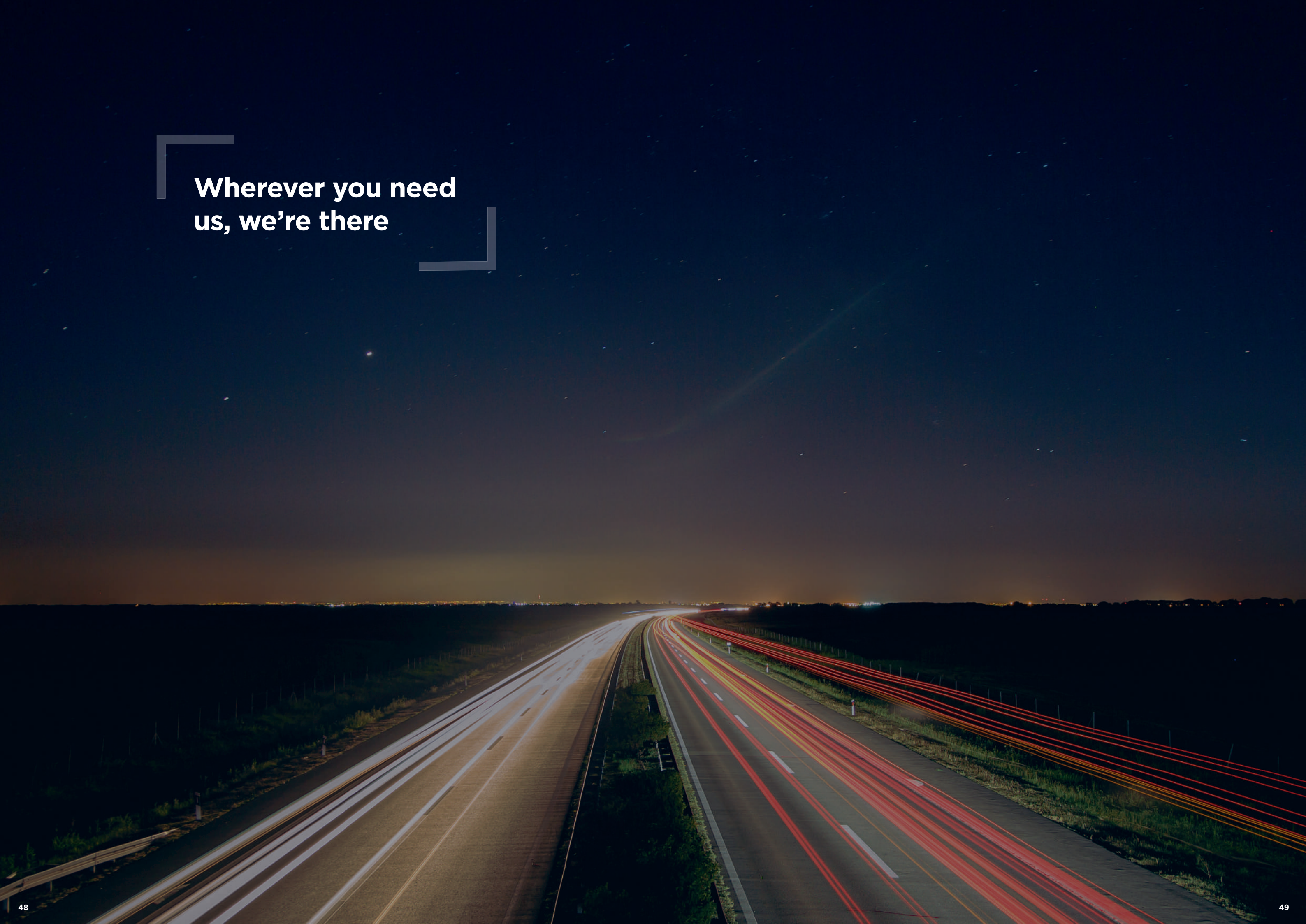
### **Type:**

- Plasticising
- Shrink-wrapping
- Cardboard Box
- Ues
- Palletised

### **Production capacity:**

2,650,000 Bars/year





**Wherever you need  
us, we're there**

# Logistics

16

LOGISTICS CENTRES  
Spain and Portugal

+50

PROPRIETARY VEHICLES

**Our extensive and strong logistics network is the last link in the chain, offering our customers a comprehensive service.**

We have more than 16 distribution centres, together with a wide range of trucks and an intelligent storage system to guarantee commitment and compliance with deadlines when delivering goods.

Quality is the basis, but **meeting deadlines is essential.**



# Industry 4.0



Monitored control system.



**Logistics management** software for cargo control and customised delivery.



**Real-time monitoring** at each stage of production.

**INDUSTRY 4.0** is a new concept in the integration of advanced technology in all stages of our production processes.

Our automated systems guarantee accurate and reliable traceability. High efficiency at all times.

The digitalisation of each stage of the production cycle enables us to foresee, detect and rigorously correct possible faults and increase our efficiency, improving the quality of our production both in the end product and in all the manufacturing phases.

We optimise every step of the manufacturing process, resulting in a more competitive end product.

**We are at the forefront of technology,** consolidating our leadership in the aluminium sector.

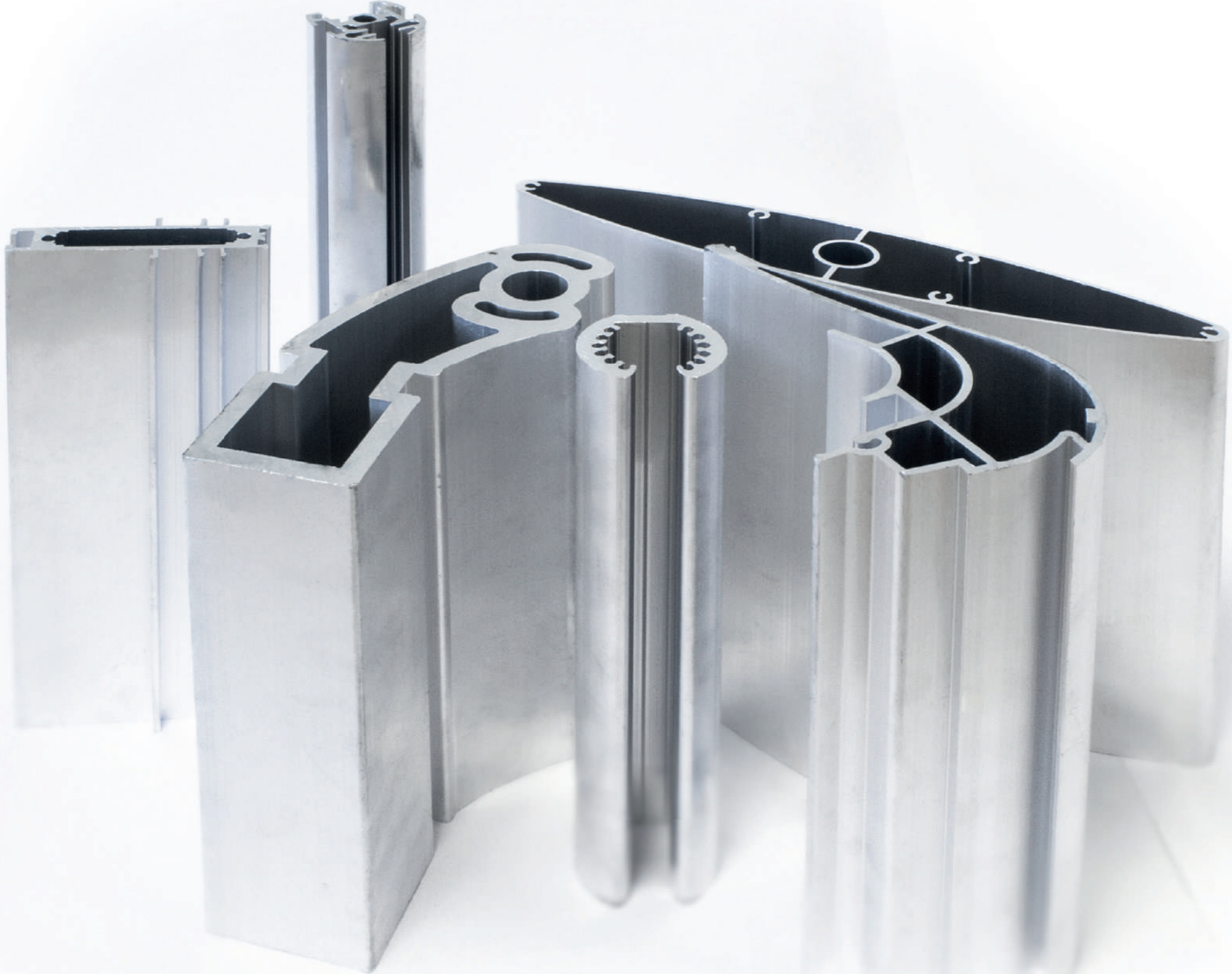


# Certified quality

**We are very self-demanding.** We work with a vision of excellence, quality and high performance. We carry out research processes in our own testing laboratories and certify our solutions in addition to external accredited bodies.

We base our quality management system on full traceability of our raw materials, and on constant review and improvement of our operations.

We bring a new meaning to the concept of quality. Sustainable. Proven. Traceable. **The basis and, at the same time, the ultimate goal of our work.**





## Sustainable STRUGAL

**A strong  
commitment to  
the environment  
around us**

Almost all aluminium products can, from a technical and economic point of view, be recycled repeatedly to produce new products without the metal losing its characteristics and properties. We promote a circular economy in order to minimise the environmental impact of our work.

The use of recycled aluminium for the production of a new aluminium ingot reduces energy consumption by 95%, all without generating waste.

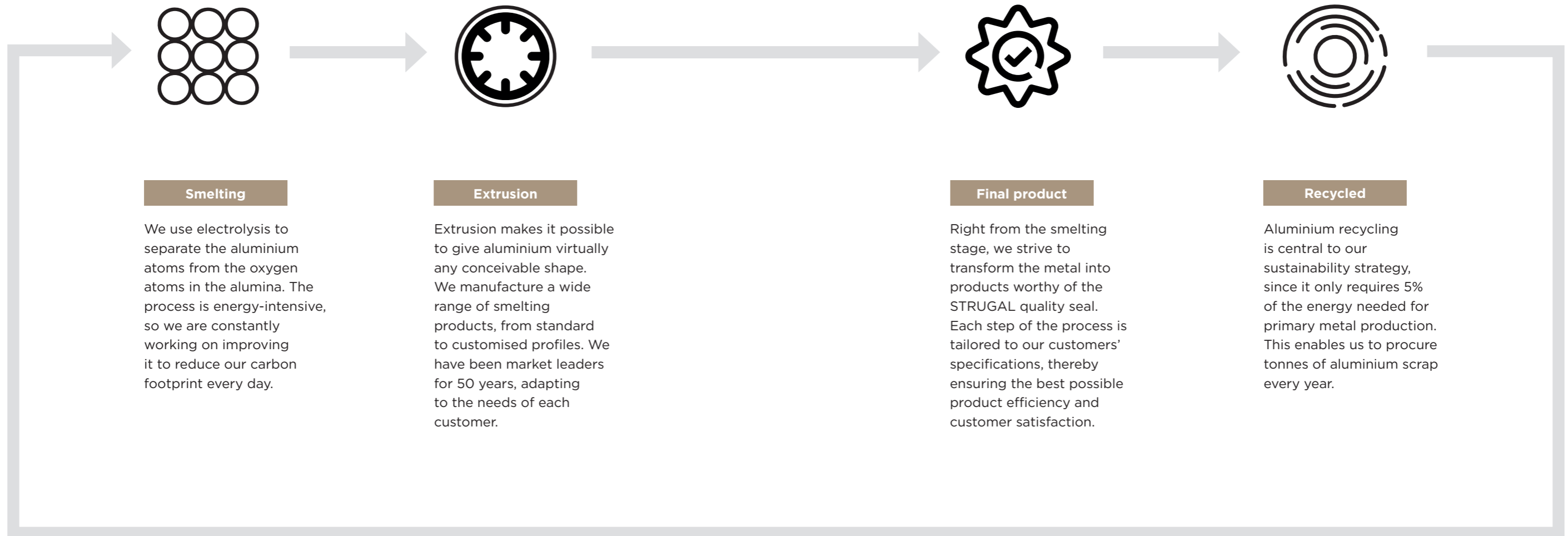
**At STRUGAL we have agreements with aluminium recycling plants, which allows us to market EVERPURE – our range of aluminium with a reduced environmental impact.**

Our production centres are equipped with purification stations that minimise the impact of waste water in the lacquering and anodising processes. We are also Bureau Veritas 14001 certified for our management systems and for the sale of aluminium profiles.

**Energy saving and the use of sustainable materials are a clear objective within our company.**

# ALUMINIUM

Sustainability and versatility without limits



## Life cycle

At STRUGAL, we control the entire aluminium life cycle, from production to the final product. Characterised by its recyclability and infinitely reusable nature, **aluminium is converted into 100% recycled products, ensuring maximum quality and sustainability at every stage.**

# STRUGAL

All data included in this catalogue is for informational purposes only. The company is therefore not responsible for possible printing errors or other technical and typographical errors.

STRUGAL reserves the right to modify the information provided. Total or partial reproduction of this document is prohibited, unless expressly authorised by STRUGAL.

The latest version of this catalogue can always be found on our website: <https://www.strugal.com/es>.